

# TURN WATER FLOW INTO CASH FLOW!

CONSERVE WATER  
+  
SAVE ENERGY  
+  
HELP THE ENVIRONMENT



**WATER PILOT**  
PROPRIETARY WATER TECHNOLOGY LLC.

## WHY YOU NEED THE WATER PILOT:

The WATER PILOT® System immediately reduces water consumption and provides you with live remote consumption monitoring for long term leak protection and water asset management. An integral, client based alarm and notification system that reports to any mobile device.

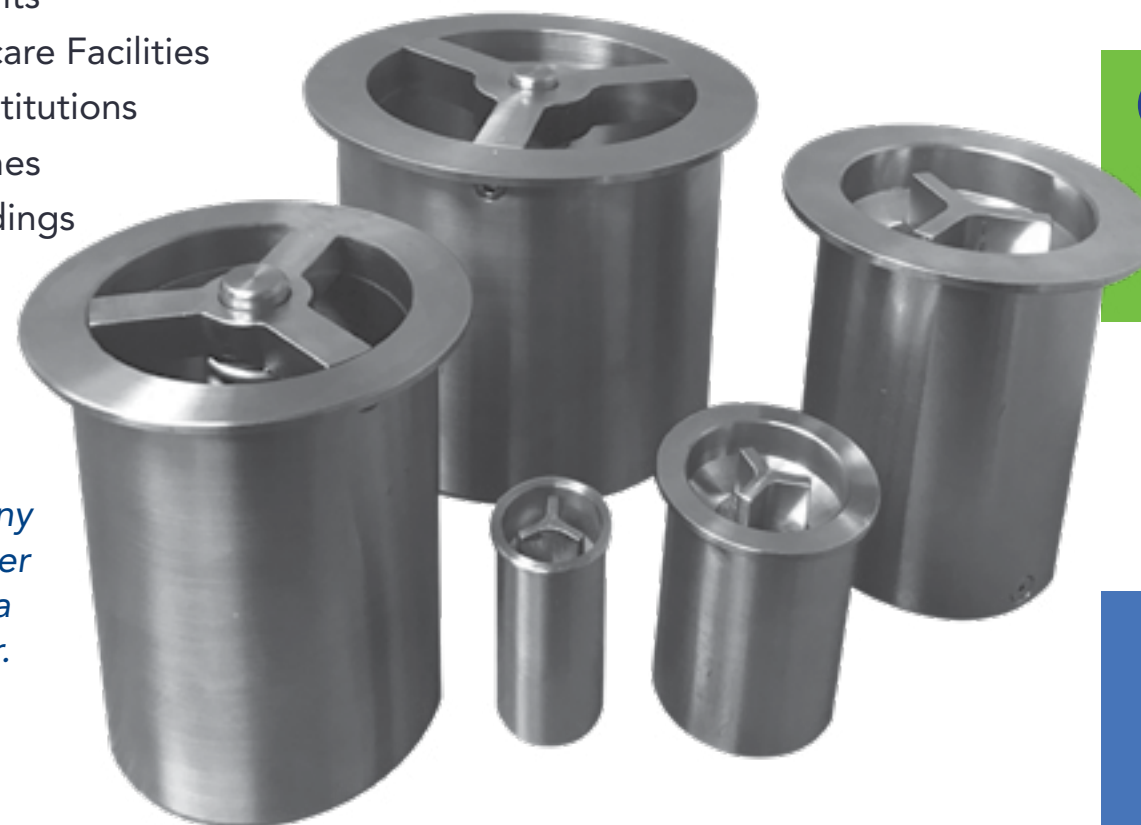
### WHO USES THE WATER PILOT:

Hotels + Resorts  
Condominiums + Apartments  
Senior Care Facilities  
Restaurants  
Hospitals + Healthcare Facilities  
Educational Institutions  
Car Washes  
Office Buildings

*The Water Pilot® is designed for use in any building drawing water that is monitored by a standard water meter.*

## IMPROVE YOUR BOTTOM LINE

- Positive cash flow from day one
- 10 to 25% or more reduction in water and sewer expense
- Mitigates water and sewer annual cost increase
- Lowers hot water heating costs
- Fewer appliances, fixture and plumbing repairs and extended life cycles
- Pays for itself in 12 to 24 months
- Maintenance Free!



## GET STARTED!

- 1 We review your past 12 month's water bills
- 2 We then record your water intake pressure (psi) at the meter
- 3 We analyze this data and present you with an assessment of your monthly savings with the Water Pilot valve
- 4 FREE System Installation by Licensed and Bonded Plumber



CALL US FOR MORE INFORMATION OR TO SCHEDULE A CONSULTATION:

**1.844.928.3718**

OR VISIT: [GOWATERPILOT.COM](http://GOWATERPILOT.COM)

**WATER PILOT**  
PROPRIETARY WATER TECHNOLOGY LLC.





## REDUCE YOUR ANNUAL WATER CONSUMPTION BY 10-25% OR MORE!

Water Pilot® precision stainless steel valve is installed on the customer's side of the water meter and insures that the meter is only reading a solid core of water

WATER METERS READ THE VOLUME OF AIR AND WATER THAT PASSES THROUGH IT. THEY DO NOT DIFFERENTIATE BETWEEN THE TWO

### THE WATER PILOT® INCLUDES:

- Precision engineered Water Pilot® water saving stainless steel valve
- Live cellular meter monitoring device, data dashboard and leak detection notification by text or email
- Data driven real time consumption comparison reports
- Free system installation by licensed and bonded master plumber

The valve creates a backpressure that compresses the volume of air that is able to pass through the meter and eliminates variations that negatively affect water readings

## IMMEDIATE IMPACT:

- ✓ Controls and manages entrained air impact on meter accuracy
- ✓ Orifice design matches your flow rate to the ideal flow rate for your facility
- ✓ Pressure control and management reduces consumption to the ideal level for your facility

### LONG TERM MONITORING SYSTEM:

The tool that protects you from water leaks, and puts you in the driver's seat with actionable information driven by user defined alarms and notifications that are actuated when the system notices any changes in water consumption. You manage and control water use.

[GOWATERPILOT.COM](http://GOWATERPILOT.COM)

HOW IT WORKS

